

The Kent County Playing Fields Association

May 2010 Newsletter

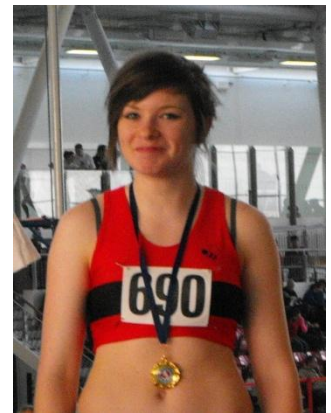


Helen Skellorn KCPFA Chairman

Since our last newsletter - Spring has arrived – although for many, it seems remote as the unseasonal cold and wet weather continues to affect the County. Nevertheless we remain active with much to report and comment upon. Early applications for assistance were received and approved for the Tunbridge Wells Cricket Club and Tunbridge Wells Borderers Sports Club with each awarded grants of £1000. The Ivy Hawkes Bursary Fund remains in demand as a further three applicants received awards. Lara Fay an Arsenal and England footballer; **Sophie Ayre** a Kent County Athletics representative and Nathaniall Jarvis, a Mountain Bike Cross Country Cyclist. Each receiving £200. Our meetings with The Kent Sports Development Unit and Kent County Cricket Board have both proven fruitful with links from their websites to ours now in place with new members attracted to the Charity as a result.

Sophie Ayre winning the Kent U17's Long Jump Championships in February

Sophie runs for Medway and Maidstone. In 2009 she won 2 Indoor Kent titles, and 3 outdoor track and field titles, she represented Kent Schools at the England schools track and field championships and also at the England Multi Event Championships. Sophie competes in the U17's this year and in her second meeting she has won the Kent Indoor Long Jump Championship and also reached the 200m Final. Our thanks go to Sophie and her father John for providing details of her success, together with a photograph.



Mr. Richard Maylam and Mr. Richard Young

Our gratitude goes to both Richard Maylam and Richard Young for their efforts in promoting the Association to some more of Kent's Cricket Clubs. Thirteen Clubs expressed interest in joining the Association and in receiving the Art & Science of Cricket Manual. In addition the book was donated to John Mitchell, Kent Cricket Board's Medway Cricket Development Officer, and to John Cunningham of Kennington Cricket Club, near Ashford. Street End Cricket Club, longstanding members of the Association, also received the Bob Woolmer book (see photo on left) from the Charity's District Representative for Canterbury Mr. Richard Young at St. Edmonds School on the 13th April.



Richard Young presenting the Bob Woolmer Art & Science of Cricket manual to the Street End Cricket Club Coach

Donations and subscriptions

Despite the recession and the general downturn in the economy the work of the Association continues unabated with demand for grants and loans increasing. Special mention then must be given to the **Stonewall Park Charitable Trust** for the generous donation made to the KCPFA. These sums together with those received from **Knole Park Golf Club, Wrotham Parish Council, Westgate & Birchington Golf Club Ladies Section, Knockholt Cricket Club, Whitstable & Seasalter Golf Club, Woodlands Manor Golf Club, Herne Bay Golf Club Ladies Section, Saltwood Cricket Club, Gillingham Jumpers Trampoline Club, Gravesend RFC, Tonbridge Juddians RFC and Tunbridge Wells Borderers Sports Club** have all contributed and enable us, as a Charity, to continue fulfilling our objectives. **A huge thank you also to all our Parish Council and Sports Club Members who have paid their subscriptions on time and at the new higher rate.** Last but not least, our gratitude goes to **Malcolm Hawkes**, for his continued effort and generosity on behalf of **The Ivy Hawkes Memorial Fund.**

The Patron's Award – The Maidstone Club November 2010

In recognition of their services to the Charity, the Patrons Award will be presented to three of our long standing Members. Ken and Shirley Daniel and Ann McQuirk have and continue to make tremendous contributions to the Charity via their participation as elected Members of the Golf Management Committee and their involvement in the Annual Cecil Leitch Competition, raising thousands of pounds each year. They will receive their awards at a luncheon to be held at the Maidstone Club. Our Patron Mr Edwin Boorman has kindly agreed to make the presentations.

Tonbridge Castle 21st April 2010

Despite our best efforts to conduct our AGM, unfortunately the elements were against us. The volcanic ash clouds that grounded aircraft throughout Europe also grounded the Secretary and with other Trustees unable to attend many items on the agenda were not considered and therefore un-ratified. This meeting has now been re-scheduled for the **23rd June at 12.30 pm at the Maidstone Club**, Earl Street, Maidstone and all **Members are invited**. Please contact the Secretary to confirm your attendance.



The Stanley Blow & Ole Kverndal Awards

The Tonbridge Castle proved to be the perfect venue to make the awards and eight applicants were successful as follows: **Rolvenden Cricket Club** re training equipment for a new U14's side. **The Kent Cricket Board** re a County tour of Guernsey for the U15's. **Saxons Orienteering Club** re a new initiative at Tunbury School. The **MNM Netball Club** re a new junior section of the club. The **Paddocks Riding for All** re competition riding. **Maidstone Roller Dance Club** re new equipment and hire costs. **Yalding Cricket Club** re two Summer Camps for cricket and **Queenborough Archers** re new equipment, ie. target bosses and nets. (See photo left)

The Ivy Hawkes Memorial Awards

Were also made during the same evening with six successful applicants receiving grants as follows; **Jasmine Pomeroy** - Karate, **Mark Cryer** - Athletics, **Jack Finch** - Cycling, **Ross Gilham-Jones** - Hockey, **Oliver Kitchen** - Boxing and **Joel Shopland** of Yalding Cricket Club re a level one coaching course. A special thank you to our Patron, **Mr. Edwin Boorman**, accompanied by his wife, who attended and made the presentations on behalf of the Charity for both Memorial Funds.

Littlebourne Youth Group Mini BMX Track

The successful opening of the mini BMX track in October last year was finalised when the surrounding garden was completed on the 17th April and guests were invited to attend the formal opening where refreshments were provided. District Representative Mr. Richard Young attended the function at the village hall along with thirty or so adults and children. Our best wishes go to all at Littlebourne Youth Group, particularly Councillor Vivienne Spratt who is largely responsible for coordinating the fundraising effort.



One of the lucky children at the new mini BMX track at Littlebourne

Larkings Chartered Accountants – Charities Seminar 28th April

Mr. Malcolm Hawkes, Mr. Richard Maylam and the Secretary attended the above seminar at the Hilton Hotel, Maidstone where guest speakers spoke about Charities, the public benefit, trustee's responsibilities and other topics. The event proved fortuitous for our Association in that it was both interesting and informative, but also financially lucrative. The management at Larkings had decided prior to the meeting that rather than charge a fee for the seminar, each attendee should pay £10 with a raffle at the end of the evening to be drawn by

one of the guests. Lucky for us, we happened to have our names drawn and the KCPFA received a cheque for the grand sum of £540! Our thanks go to the Partners of Larkings for organising a spring seminar and for their generosity.

Loans

Loans of £24,000 and £20,000 respectively have been approved for Tunbridge Wells Borderers Sports Club, regarding their extension and club house renovation work and to Bly Spartans Football Club for floodlighting to their football pitch.

Grants

Several grants of £1000 have been awarded this year and include Tunbridge Wells Borderers Sports Club, towards the cost of renovating their clubhouse, Yalding Cricket Club towards the cost of interior renovation of their pavilion, and Tunbridge Wells Cricket Club towards the cost of new outdoor cricket nets. A grant of £250 was also approved for Crockenhill Parish Council, towards the cost of providing a new disabled 'kissing gate'.

October Council Meeting

Following last years successful Council meeting, the first for several years, Maidstone Town Hall has again been chosen as the venue for the meeting in 2010. Invitations will be sent nearer the date but I would ask our District Representatives, Local Authority Representatives and the relevant Governing Heads of Sport to pencil in their diaries, the 22nd October 2010. The format of the meeting will be broadly similar with tea and coffee prior to the meeting followed by a buffet lunch with wine afterwards. A guest speaker will be present but has yet to be confirmed.

Kent County Show

Richard Maylam is also largely responsible for our forthcoming participation at the **Kent County Show** at Detling on the 16th to 18th July later this year where we hope to showcase the Charity's work both past and present. Directly opposite the Eurostar exhibit in the **Kent Pavilion** is where you'll find us and Members or not, a warm welcome awaits those who care to visit.

Cecil Leitch Five Club Competition – Wrotham Heath Golf Club Monday 14th June 2010

The final entries for the above competition are now in and the total number of finalists is 116, up from 102 last year. The number of original entrants is also higher at 3,320 compared to 3,029. We look forward to welcoming our 65 ladies and 51 men's finalists on the day. On behalf of the Charity and all members of the Golf Management Committee, thank you to every golf club for their participation and to each and every competitor for your continued support and generosity. We are still seeking sponsors for the 18 holes contested on the day at £60 per hole, giving sponsors the opportunity to advertise on each tee, in the match programme and possibly the local press. Please contact the Secretary for all details.



Wrotham Heath Golf Club – Club House & Pro Shop

The Ernest Virgo Memorial Award

Is open to those young aspiring Cricketers of lesser means and opportunity so that more young people can be encouraged to participate in the sport. Do you have a player that could benefit from up to £300 a year?

Final Comment

Over the years the KCPFA has built up a revolving fund by careful and cautious management from which we provide the grants, loans and all other assistance above, but funds are limited. We rely on voluntary subscription/membership and charitable donations to meet the costs of administration. The nominal rates of subscription are kept low to attract support whilst we provide a service that is valuable, both intrinsically and financially. We do hope you continue supporting the Association.